



MODEL AH/RI OPERATING AND MAINTENANCE INSTRUCTIONS

INSTALLATION

The MODEL AH/RI is shipped completely assembled. All that is necessary to prepare it for service is to connect a ½ inch air line to the filter inlet. The light cord should be connected to a 115 volt single phase power source. Align ramp and slide rod through tubes to attach it to the machine. Make sure lubricator has oil in it.

OPERATING INSTRUCTIONS

Roll tire up ramp onto traction rollers. Lift tire to desired working level using lift valve on valve post.

CAUTION: LIFTING SPEED IS PRESET BY MEANS OF A FLOW CONTROL AT THE TOP OF THE LIFT CYLINDER. ANY FURTHER ADJUSTMENT CAN CAUSE THE LIFT TO ACCELERATE UPWARDS TOO FAST FOR SAFE OPERATION.

Place the bead hooks between the tire beads. The spread hooks are adjustable to four height positions. Most tires can be inspected with spread hooks in one position. The spread hooks are held in position with spring loaded lock pins. To release pins, place hands under horizontal bar and, with thumb, release into the new position when centered on the hold.

Spread tire to desired width using the spread valve on the valve post.

If tire is lifted off traction rollers when it is spread, the spread hooks should be lowered to the next position.

Position light inside tire and depress foot pedal to rotate tire. Speed of rotation can be changed by varying the pressure on the foot pedal. Regulator pressure to air motor, 65 PSI; not to exceed 100 PSI.

If a repair is needed inside the tire, stop rotation of tire with the section needing repair at the bottom position on traction rollers. Invert tread using the inverting valve on the valve post. Section repairs can now be made.

CAUTION: DO NOT INVERT TIRE WITH SPREAD HOOKS DISENGAGED FROM BEADS OR WHILE ROTATING TIRE.

To lower tire, disengage spread hooks and push down on lift valve. Ramp will swing into position for rolling tire off rollers.

CAUTION: KEEP FEET CLEAR FROM BASE OF MACHINE WHEN LOWERING TIRE LIFT.

MAINTENANCE

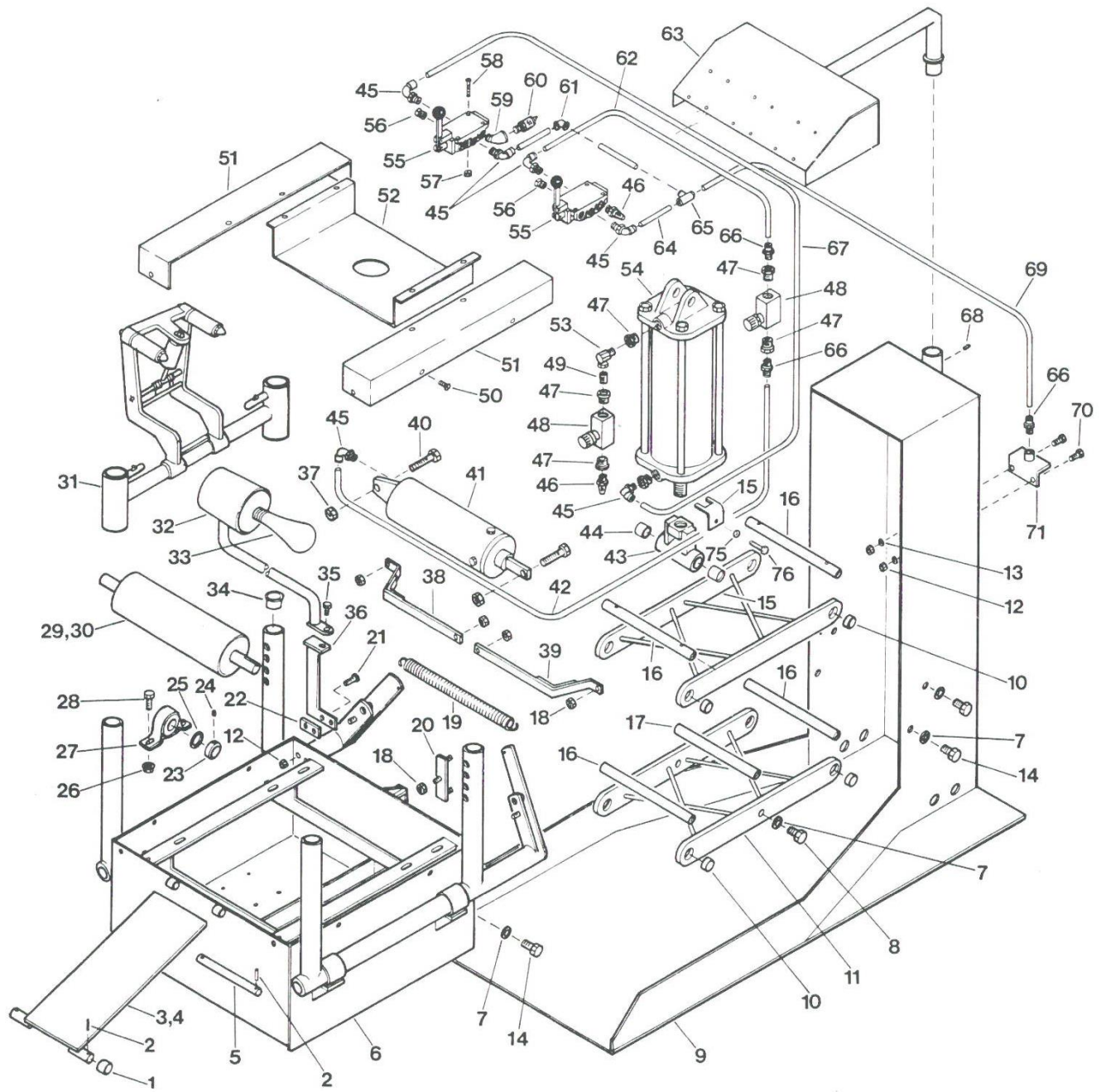
Disconnect air supply before servicing machine.

The vertical posts should be cleaned and waxed periodically to allow hook assemblies to slide easily.

Check bolts on lift linkage periodically, to make sure they remain tight.

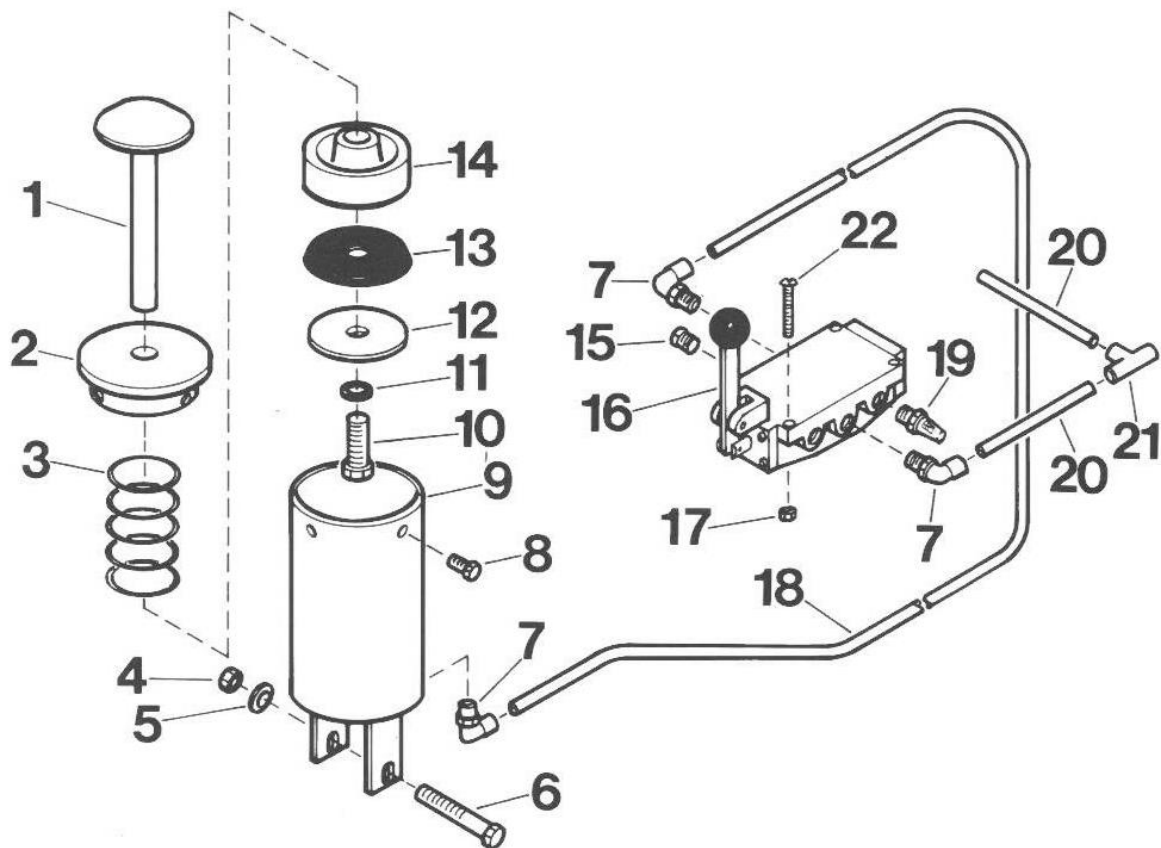
Once a month pour about $\frac{1}{4}$ cup of 10 or 20 SAE motor oil through the plug in pipe tee on the spread cylinder and through the plug in the cover plate on the invert cylinder.

The lift cylinder needs no lubrication.



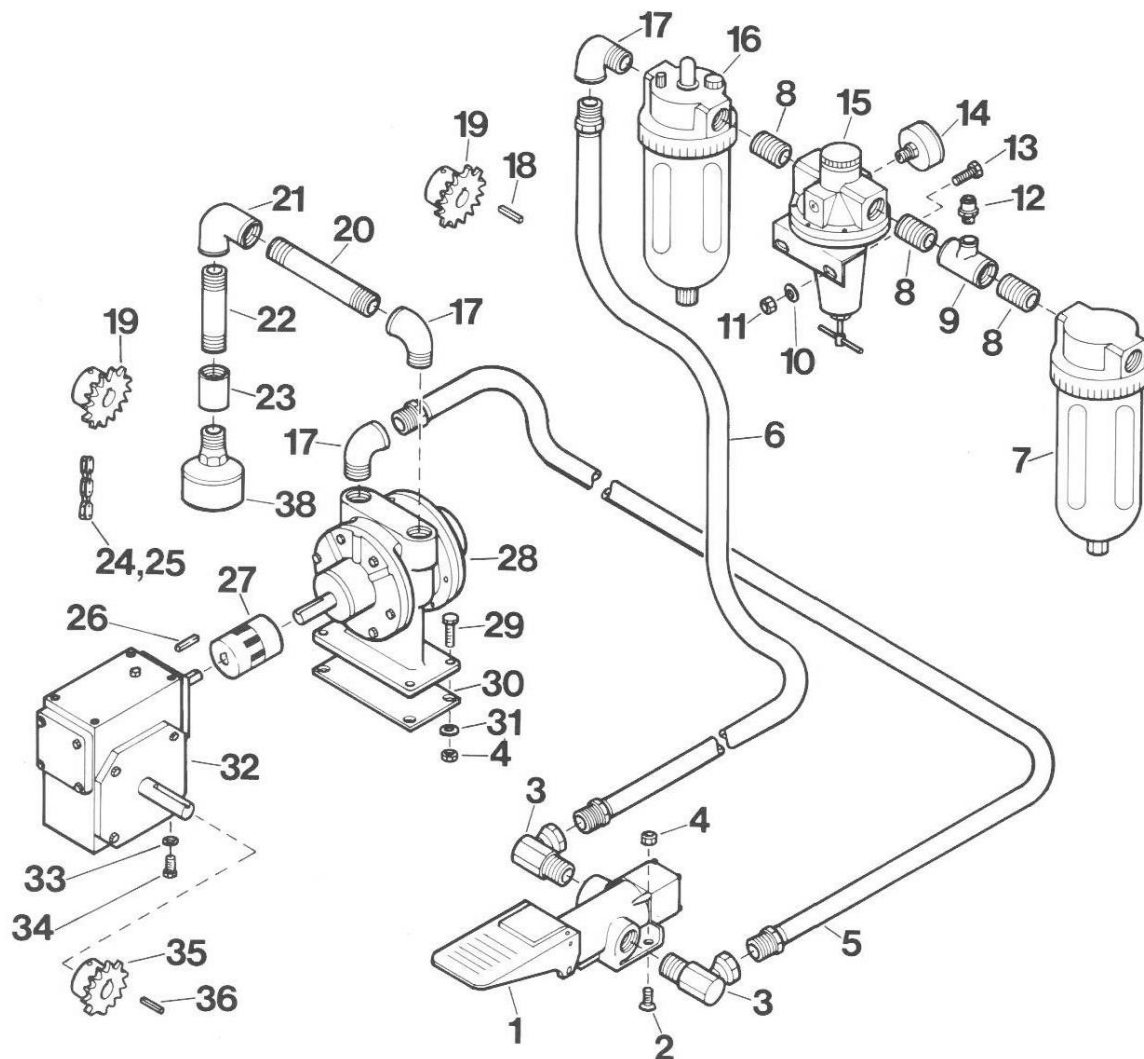
MODEL AH/RI (Manual)

| ITEM NO. | PART NO. | NO. REQ'D | DESCRIPTION | ITEM NO. | PART NO. | NO. REQ'D | DESCRIPTION |
|----------|----------|-----------|-------------------------|----------|----------|-----------|-------------------------------------|
| 1 | 565.268 | 4 | Tube | 39 | 553.950 | 1 | Short Link |
| 2 | 5.061 | 4 | Spring Pin | 40 | 25.028 | 2 | Capscrew |
| 3 | 4.859 | 1 | Ramp | 41 | 187.900 | 1 | Spread Cylinder (See page 7) |
| 4 | 118.446 | 1 | Abrasive Pad | 42 | 582.268 | 1 | Airline |
| 5 | 321.149 | 1 | Shaft | 43 | 9.822 | 1 | Clevis |
| 6 | 17.841 | 1 | Housing | 44 | 43.039 | 2 | Bushing |
| 7 | 56.108 | 10 | Lockwasher | 45 | 342.096 | 6 | Male Elbow |
| 8 | 159.028 | 2 | Capscrew | 46 | 35.865 | 2 | Muffler |
| 9 | 83.834 | 1 | Base Frame | 47 | 8.039 | 6 | Reducer Bushing |
| 10 | 80.039 | 8 | Bushing | 48 | 222.190 | 2 | Flow Control |
| 11 | 12.874 | 1 | Yoke | 49 | 221.096 | 1 | Close Nipple |
| 12 | 160.055 | 4 | Hex Locknut | 50 | 148.026 | 12 | Tapping Screw |
| 13 | 110.108 | 4 | Washer | 51 | 126.098 | 2 | Chain Cover |
| 14 | 47.028 | 8 | 1/2 NC x 1 3/4 HHCS | 52 | 125.098 | 1 | Top Cover |
| 15 | 28.564 | 1 | Piston Rod Lock | 53 | 48.096 | 1 | Swivel Elbow |
| 16 | 135.104 | 4 | Shaft | 54 | 36.030 | 1 | Lift Cylinder |
| 17 | 136.104 | 1 | Shaft | 55 | 66.190 | 2 | Valve |
| 18 | 154.055 | 5 | Hex Locknut | 56 | 1.006 | 2 | Pipe Plug |
| 19 | 11.110 | 1 | Spring | 57 | 57.055 | 8 | Hex Nut |
| 20 | 199.950 | 1 | Link Pivot | 58 | 161.028 | 8 | Rd. Hd. Mach. Screw |
| 21 | 41.028 | 2 | Capscrew | 59 | 38.096 | 1 | Street Elbow |
| 22 | 487.111 | 1 | Bracket | 60 | 36.885 | 1 | Speed Control Muffler |
| 23 | 37.489 | 4 | Collar | 61 | 341.096 | 1 | Union Elbow |
| 24 | 49.028 | 8 | Set Screw | 62 | 186.646 | 1 | Airline |
| 25 | 7.039 | 4 | Machine Bushing | 63 | 18.879 | 1 | Valve Post |
| 26 | 103.055 | 8 | Flange Locknut | 64 | 185.646 | 3 | Airline |
| 27 | 20.107 | 4 | Bearing | 65 | 339.96 | 1 | Union Tee |
| 28 | 21.028 | 8 | Capscrew | 66 | 340.096 | 3 | Male Connector |
| 29 | 11.863 | 2 | Traction Roller | 67 | 187.646 | 1 | Airline |
| 30 | 120.446 | 2 | Abrasive Sleeve | 68 | 207.028 | 1 | Nylon Set Screw |
| 31 | | 2 | Spread Arm (See page 7) | 69 | 575.268 | 1 | Airline |
| 32 | 16.376 | 1 | Lamp | 70 | 10.028 | 2 | Capscrew |
| 33 | 17.376 | 1 | Bulb | 71 | 9.847 | 1 | Manifold |
| 34 | 14.006 | 4 | Caplug | 72 | 198.643 | 1 | Air Revolve Option (See page 5) |
| 35 | 280.028 | 1 | Capscrew | 73 | 199.643 | 1 | Invert Cylinder Option (See page 4) |
| 36 | 40.848 | 1 | Light Bracket | 74 | 201.643 | 1 | Reversible Option (See page 6) |
| 37 | 58.055 | 2 | Hex Locknut | 75 | 8.108 | 1 | 1/4 Int. Tooth Lockwasher |
| 38 | 552.950 | 1 | Long Link | 76 | 210.026 | 1 | 1/4 NC x 5/8 HHCS |



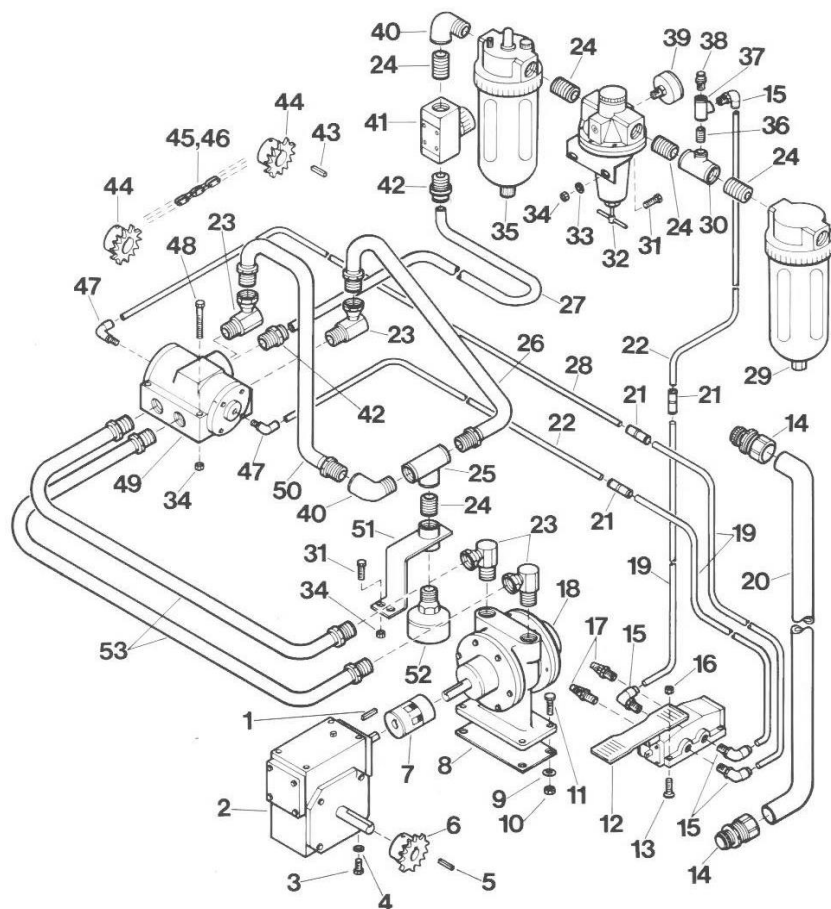
INVERT OPTION (199.643)

| ITEM NO. | PART NO. | NO. REQ'D | DESCRIPTION | ITEM NO. | PART NO. | NO. REQ'D | DESCRIPTION |
|----------|----------|-----------|---------------|----------|----------|-----------|---------------------|
| 1 | 6.877 | 1 | Piston Rod | 12 | 32.108 | 1 | Cup Washer |
| 2 | 3.098 | 1 | Cover Plate | 13 | 15.041 | 1 | Piston Cup |
| 3 | 39.110 | 1 | Spring | 14 | 23.051 | 1 | Piston |
| 4 | 154.055 | 1 | Hex Locknut | 15 | 1.006 | 1 | Pipe Plug |
| 5 | 15.108 | 1 | Washer | 16 | 66.190 | 1 | Valve |
| 6 | 22.028 | 1 | Capscrew | 17 | 57.055 | 4 | Hex Nut |
| 7 | 342.096 | 3 | Male Elbow | 18 | 199.646 | 1 | Airline |
| 8 | 280.028 | 3 | Capscrew | 19 | 35.885 | 1 | Muffler |
| 9 | 13.828 | 1 | Cylinder | 20 | 185.646 | 2 | Airline |
| 10 | 239.028 | 1 | Capscrew | 21 | 338.096 | 1 | Union Tee |
| 11 | 240.167 | 1 | 14 Mil Gasket | 22 | 161.028 | 4 | Rd. Hd. Mach. Screw |



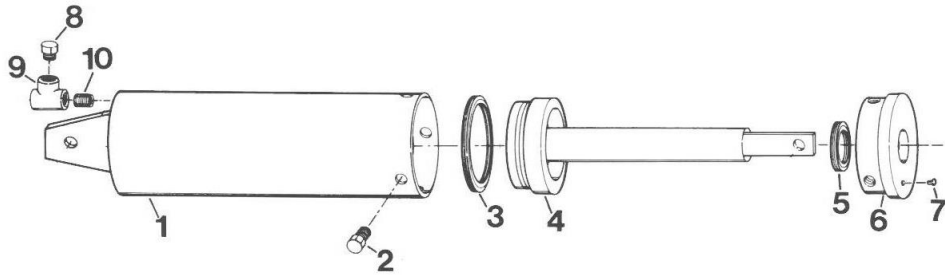
AIR REVOLVE OPTION (198.643)

| ITEM NO. | PART NO. | NO. REQ'D | DESCRIPTION | ITEM NO. | PART NO. | NO. REQ'D | DESCRIPTION |
|----------|----------|-----------|------------------------|----------|----------|-----------|-------------------------|
| 1 | 223.190 | 1 | Foot Pedal Valve | 20 | 114.096 | 1 | Pipe Nipple |
| 2 | 347.028 | 2 | Flat Head Screw | 21 | 43.096 | 1 | Pipe Elbow |
| 3 | 25.096 | 2 | Swivel Elbow | 22 | 343.096 | 1 | Pipe Nipple |
| 4 | 145.055 | 6 | Hex Lock Nut | 23 | 1.034 | 1 | Pipe Coupling |
| 5 | 37.940 | 1 | Hose | 24 | 50.066 | 1 | Chain |
| 6 | 38.940 | 1 | Hose | 25 | 48.062 | 1 | Offset Link (Not shown) |
| 7 | 21.018 | 1 | Filter | 26 | 37.251 | 1 | Key |
| 8 | 58.096 | 3 | Close Nipple | 27 | 41.034 | 1 | Flex Coupler |
| 9 | 303.096 | 1 | Pipe Tee | 28 | 40.259 | 1 | Air Motor |
| 10 | 110.108 | 2 | Washer | 29 | 14.028 | 4 | Capscrew |
| 11 | 22.055 | 2 | Hex Lock Nut | 30 | 73.186 | 1 | Spacer |
| 12 | 340.096 | 1 | Male Connector | 31 | 123.108 | 4 | Washer |
| 13 | 10.028 | 2 | Capscrew | 32 | 7.032 | 1 | Gear Reducer |
| 14 | 7.023 | 1 | Gauge | 33 | 8.108 | 4 | Lock Washer |
| 15 | 204.190 | 1 | Regulator with Bracket | 34 | 210.028 | 4 | Capscrew |
| 16 | 2.188 | 1 | Lubricator | 35 | 16.228 | 1 | Sprocket |
| 17 | 78.096 | 3 | Street Elbow 90° | 36 | 8.251 | 1 | Key |
| 18 | 26.251 | 2 | Key | 37 | 15.835 | 1 | Foot Guard (Not shown) |
| 19 | 45.228 | 2 | Sprocket | 38 | 81.885 | 1 | Muffler |



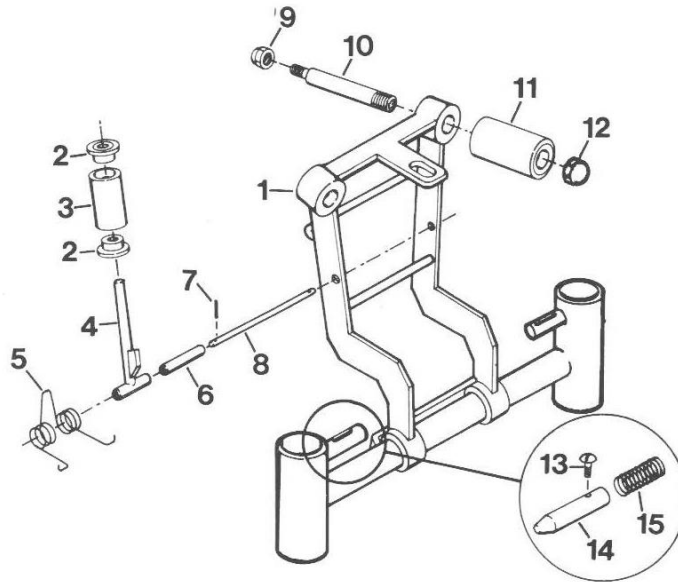
REVERSIBLE REVOLVE OPTION (201.643)

| ITEM NO. | PART NO. | NO. REQ'D | DESCRIPTION | ITEM NO. | PART NO. | NO. REQ'D | DESCRIPTION |
|----------|----------|-----------|---------------------|----------|----------|-----------|--------------------------------|
| 1 | 37.251 | 1 | Key | 28 | 573.268 | 1 | Airline |
| 2 | 7.032 | 1 | Gear Reducer | 29 | 21.018 | 1 | Filter |
| 3 | 210.028 | 4 | Capscrew | 30 | 303.096 | 1 | Tee |
| 4 | 8.108 | 4 | Lock Washer | 31 | 10.028 | 4 | Capscrew |
| 5 | 8.251 | 1 | Key | 32 | 204.190 | 1 | Regulator with Bracket |
| 6 | 47.228 | 1 | Sprocket | 33 | 110.108 | 2 | Washer |
| 7 | 41.034 | 1 | Flex Coupler | 34 | 160.055 | 8 | Hex Lock Nut |
| 8 | 73.186 | 1 | Spacer | 35 | 2.188 | 1 | Lubricator |
| 9 | 123.108 | 4 | Washer | 36 | 221.096 | 1 | Close Nipple |
| 10 | 145.055 | 4 | Lock Nut | 37 | 249.096 | 1 | Tee |
| 11 | 14.028 | 4 | Capscrew | 38 | 340.096 | 1 | Male Connector |
| 12 | 241.190 | 1 | Treadle Valve | 39 | 7.023 | 1 | Gauge |
| 13 | 186.028 | 4 | Rd. Hd. Mach. Screw | 40 | 75.096 | 2 | Street Elbow |
| 14 | 115.980 | 2 | Conduit Connector | 41 | 222.190 | 1 | Flow Control |
| 15 | 342.096 | 4 | Male Elbow | 42 | 354.096 | 2 | Male Connector |
| 16 | 57.055 | 4 | Hex Nut | 43 | 26.251 | 2 | Key |
| 17 | 35.885 | 2 | Muffler | 44 | 48.228 | 2 | Sprocket |
| 18 | 40.259 | 1 | Air Motor | 45 | 50.066 | 1 | Chain |
| 19 | 17.268 | 3 | Airline | 46 | 48.062 | 1 | Offset Link (Not shown) |
| 20 | 250.980 | 1 | Conduit | 47 | 346.096 | 2 | Male Elbow |
| 21 | 353.096 | 3 | Straight Union | 48 | 77.028 | 4 | Capscrew |
| 22 | 572.268 | 2 | Airline | 49 | 240.190 | 1 | Pilot Valve |
| 23 | 25.096 | 4 | Swivel Elbow | 50 | 40.940 | 1 | Hose |
| 24 | 58.096 | 5 | Close Nipple | 51 | 41.878 | 1 | Muffler Bracket |
| 25 | 70.096 | 1 | Tee | 52 | 81.885 | 1 | Muffler |
| 26 | 39.940 | 1 | Hose | 53 | 41.940 | 2 | Hose |
| 27 | 574.268 | 1 | Airline | 54 | 16.835 | 1 | Foot Treadle Guard (Not shown) |



SPREAD CYLINDER (187.900)

| ITEM NO. | PART NO. | NO. REQ'D | DESCRIPTION | ITEM NO. | PART NO. | NO. REQ'D | DESCRIPTION |
|----------|----------|-----------|--------------------|----------|----------|-----------|--------------|
| 1 | 194.950 | 1 | Cylinder | 6 | 327.098 | 1 | Cover Plate |
| 2 | 5.028 | 4 | 7/16 NC x 3/4 HHCS | 7 | 4.006 | 1 | Caplug |
| 3 | 204.041 | 1 | Block Vee-Seal | 8 | 1.006 | 1 | Pipe Plug |
| 4 | 195.950 | 1 | Piston and Rod | 9 | 249.096 | 1 | Pipe Tee |
| 5 | 326.041 | 1 | Rod Seal | 10 | 221.096 | 1 | Close Nipple |



SPREAD ARM ASSEMBLY

| ITEM NO. | PART NO. | NO. REQ'D | DESCRIPTION | ITEM NO. | PART NO. | NO. REQ'D | DESCRIPTION |
|----------|----------|-----------|---------------------|----------|----------|-----------|---------------------------|
| 1 | 26.839 | 1 | Spread Hook | 9 | 71.055 | 2 | Hex Cap Nut |
| 2 | 18.107 | 2 | Bead Roller Bearing | 10 | 79.104 | 2 | Spread Roller Shaft |
| 3 | 83.268 | 1 | Bead Roller | 11 | 13.963 | 2 | Spread Roller |
| 4 | 4.863 | 1 | Roller Weldment | 12 | 72.055 | 2 | Hex Cap Nut |
| 5 | 25.110 | 1 | Bead Roller Spring | 13 | 155.028 | 2 | 10-24 Pan Hd. Screw x 5/8 |
| 6 | 71.446 | 2 | Sleeve | 14 | 153.061 | 2 | Latch Pin |
| 7 | 32.061 | 2 | 1/8 x 3/4 Drive Pin | 15 | 18.110 | 2 | Latch Spring |
| 8 | 82.104 | 1 | Shaft | | | | |

COMMERCIAL WARRANTY

This product is warranted by BRANICK INDUSTRIES, INC. to the original user-owner against defective materials or workmanship for a period of one year from the date of shipment. During the warranty period, at the discretion of Branick management, if the product is found to be defective, it will be repaired or replaced without charge. For service, contact Branick (800-437-4394) to obtain an RMA. Any product shipped to Branick must have an RMA and proof of original shipment date. The repaired or replacement product will be returned with transportation charges prepaid by Branick.

This warranty does not cover defects in the product caused by ordinary wear and tear, abuse, misuse, overloading, accident (including shipping damage), improper maintenance, alteration, or any other cause not the result of defective materials or workmanship.

REPAIR OR REPLACEMENT IS THE EXCLUSIVE REMEDY FOR DEFECTIVE PRODUCT UNDER THIS WARRANTY. THIS WARRANTY IS EXPRESSLY IN LIEU OF ALL OTHER WARRANTIES, INCLUDING ANY IMPLIED WARRANTY OF MERCHANT ABILITY OR ANY IMPLIED WARRANTY OF FITNESS FOR A PARTICULAR PURPOSE OF THIS PRODUCT. BRANICK INDUSTRIES, INC. SHALL NOT BE LIABLE FOR ANY CONSEQUENTIAL OR INCIDENTAL DAMAGES.

BRANICK INDUSTRIES, INC. reserves the right to make changes in the design or construction of our products without obligation to incorporate such changes in products already sold and without notice.

Service parts and regular repair service are available from authorized distributors of Branick products, or from:

BRANICK INDUSTRIES, INC.
4245 Main Ave.
Fargo, North Dakota 58103
Toll Free: 800-437-4394

